

# Join Our Movement of Positive Change

The Kolo Nafaso direct shea-sourcing programme



## The Shea-collecting Women

Collecting shea is a source of steady income for women in West Africa, creating a ripple effect for the good of their communities.

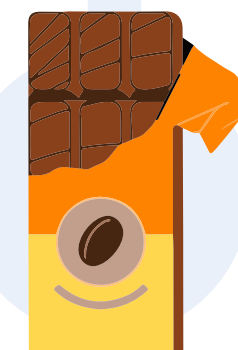


## Consumers

Consumers know their actions and choices have an impact. Every bite of chocolate contributes to strengthening this positive ripple effect.

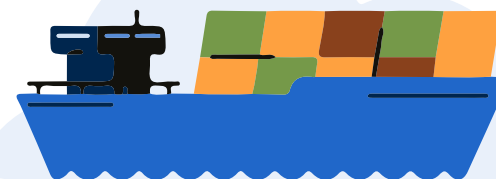
## Chocolate

Manufacturers and consumers get more than sustainability claims; high quality, great texture and excellent taste too!



## AAK Extension Officer

The AAK extension officers visit the villages, weigh the kernels, and do transparent and direct business with the women. Year after year.



## Chocolate Manufacturing

The manufacturer producing the chocolate is guaranteed traceability and a sustainable supply chain.



## Significant Impact

More than 320,000 women – working together in women's groups – have a significant impact on the lives of 1.5 million people in West Africa.

## Resource Efficiency

The shea collectors are taught how to steam instead of boil the kernels, to save on water and wood.

## Women's Empowerment

The shea-collecting women become empowered economic actors with an independent income.



## Easy Access to Clean Water

Bonuses enable women to invest in initiatives that benefit the entire community, such as wells for clean water.

## Income Diversification

Kolo Nafaso helps women to invest in future income-generating activities, such as the trading of seeds.

## Education

Women invest in their children's education.